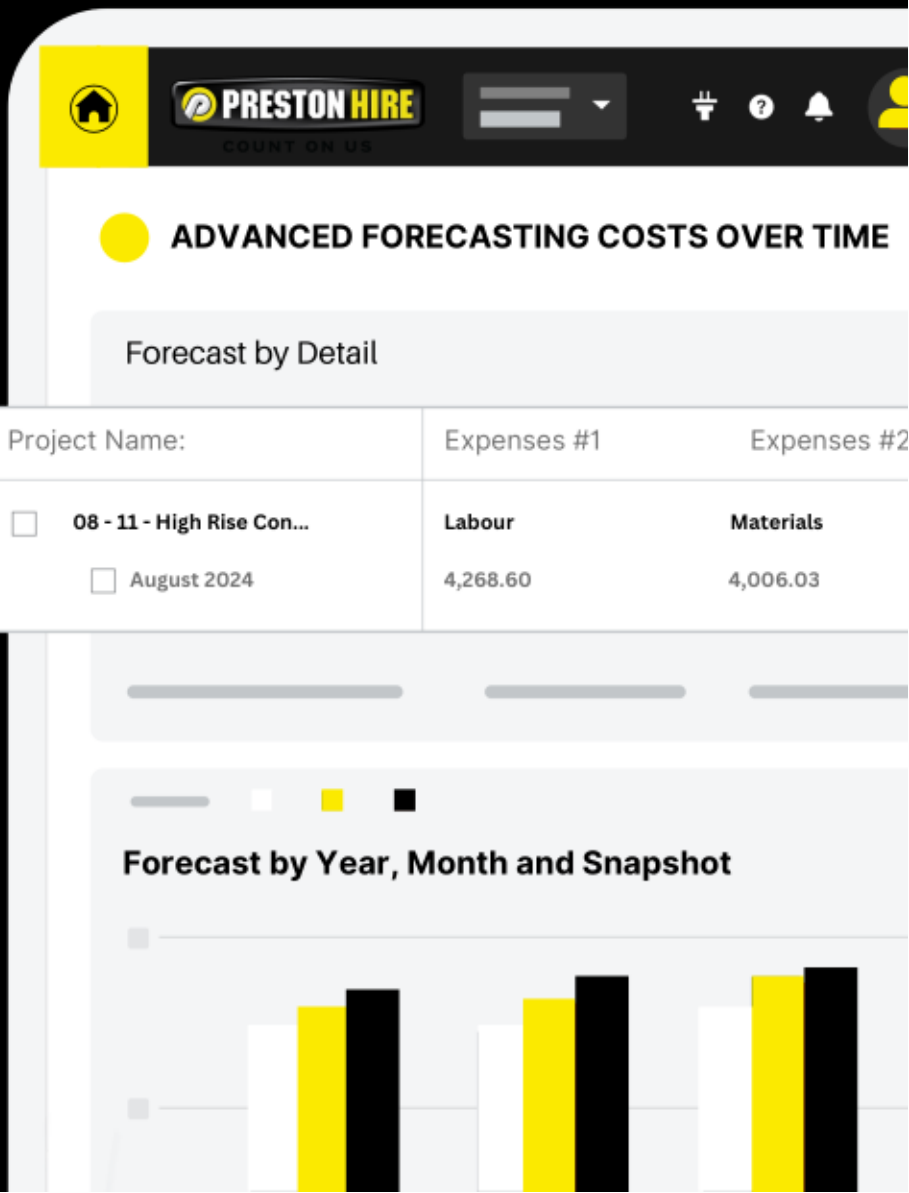


Enhance Your Operational Efficiency With The Right Construction Tool

Protect your investment with the right construction technology.
An **Industry Game** Changer.



Introduction

The construction industry is an important contributor to New Zealand's economy, generating approximately NZ\$17.6 billion dollars a year and employing over three hundred thousand people.

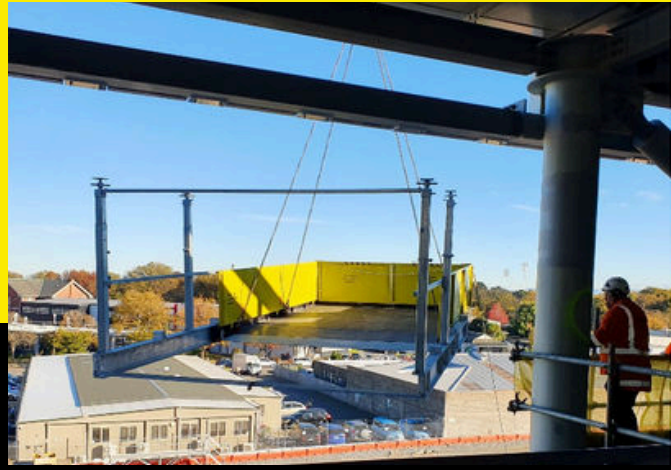
However, there are many pain points faced by construction companies that challenge growth, productivity and profitability. Factors like project delays, price increases on materials and inefficient work practices continue to negatively impact the return on investments for projects.

Innovative construction tools are needed to tackle these problems. But what one tool can increase productivity and efficiency, all while reducing costs and promising a high ROI?

The SuperDeck® Retractable Loading Platform System – The Construction Industry's most efficient material handling solution!

Read on to understand why investing in the right tools for your job is a fruitful endeavor guaranteed to increase productivity, and to keep material handling costs low.

Contents



01	Construction Industry Statistics	3	→
02	Common Pain Points Faced by Construction Companies	4	→
03	What is the Industry Game Changer? What Can This System Do For You? Features and Benefits	5	→
04	How a Planned System Can Help	7	→

This guide is to help owner-developers like you understand potential financial risks associated with construction. It explores how construction tools can alleviate the pressures faced today and in the future.

Let's arm you with the confidence to make the best decisions for your business.

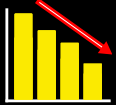
Construction Industry Statistics



The construction industry contributes over NZ\$17.6 billion dollars to the New Zealand economy.



Rising costs in construction continue to impede the growth of construction companies. Supply chain disruptions, inflation, surge in electricity and oil prices amongst other factors has led to a continual upward trend of costs in construction projects and lower ROI



Research has shown that unproductive work activities as costing New Zealand construction companies NZ\$53billion a year in lost opportunities.



Traditional outriggers can cause costly delays, taking up to 45 minutes to install, relocate and remove.



A skilled labour shortage is an ongoing issue. With \$64 billion dollars' worth of infrastructure projects alone planned for 2021-2026, demand for labourers is only going to increase over time.

Common Pain Points Faced by Construction Companies

Rising Project Expenses: Rising costs continue to impede the growth of construction companies. This is exerting sustained pressure on fixed-price contracts and margin targets, leading to lower returns on investment and higher rates of insolvency.

Poor Productivity: The New Zealand construction sector continues to lag behind other industries when it comes to achieving stable, strong productivity growth over time. From 2020 to 2023, labour productivity only grew at a rate of 0.5 per cent per annum, making construction one of the lowest performing sectors. Material handling inefficiencies are one example of unproductive work activities that can lead to stretched project timelines.

Skilled Labour Shortage: Skilled labour shortage is an issue stemming from various factors, including tighter immigration policies and an aging workforce. This imbalance between the available workforce and the labour demands of projects often leads to delayed timelines, incurring penalties and reducing profits. Many companies, therefore, are looking for solutions that help mitigate the shortage of skilled labourers.

Outdated Installation Methods: Traditional outriggers can cause costly delays due to their outdated installation method. It takes upwards of 45 minutes to install, relocate, or remove fixed decks, due to the required minimum of six re-shore props and the fact that they cannot be bolted down. This timely installation method negatively impacts productivity on site.

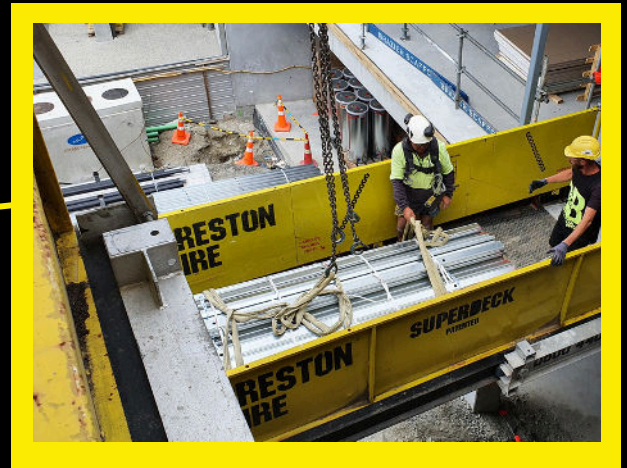
What is the Industry Game Changer?

Preston Hire's SuperDeck® Retractable Loading Platform System is an innovative, retractable loading platform system used for material handling on construction sites. Utilised as a drawer-like system to quicken the material handling process, SuperDecks are able to be stacked vertically, one above the other, making them suited for single AND multi-story construction projects.



Able to be stacked vertically, SuperDecks are retractable and can be used as a drawer-like system.

Used to quicken the material handling process, producing an efficient and safe workflow.



Installed vertically in as little as 15 minutes, using a two prop method or a bolt down method.



What Can This System Do For You?

Features

- Can stack vertically
- Able to be installed on any building profile
- Retractable
- Fast installation, relocation and removal
- Can hold up to 5000kgs



Advantages

- Quickens the material handling process
- Suited for all building projects
- Rolls in and out to receive and deliver loads
- Reduces labour hours and workers needed
- Holds a large amount of weight

How a Planned System Can Help

The SuperDeck Retractable Loading Platform is tailored to suit any project:



It can be installed and relocated within 15 minutes, uses a two prop method, and can be bolted down as compared to traditional outriggers, **boosting productivity**.



It eliminates the need for extra human resources as it requires only one operator and no need for carrying materials to inaccessible levels, **saving labour costs**.



Retractable and stacked vertically as a drawer-like system, this innovative tool has been proven to quicken the material handling process, **improving efficiency**.