

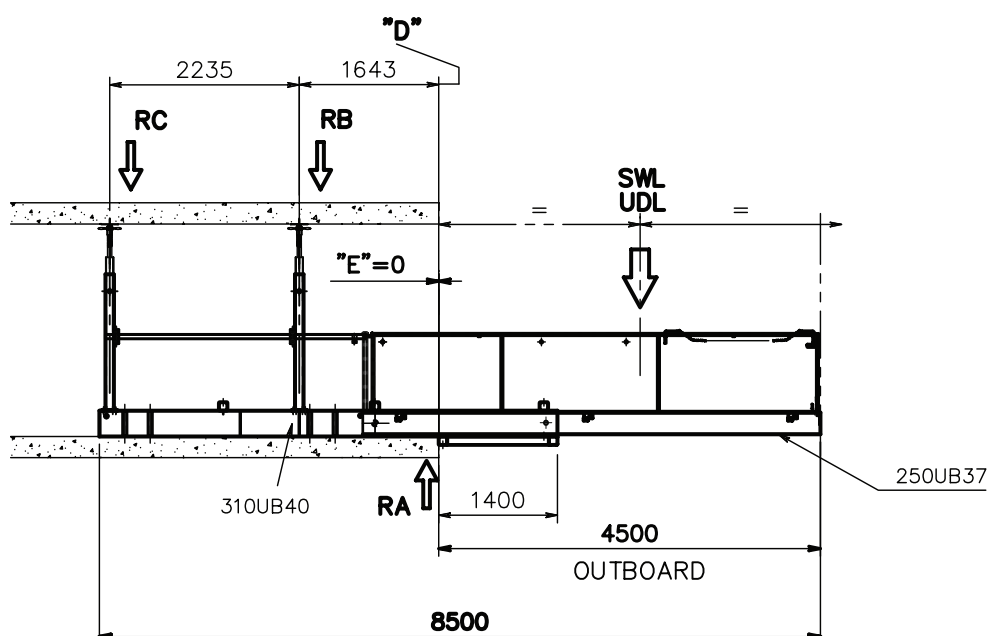
**PROP REACTIONS**

| LOAD/REACTION                   | 4500mm Outboard | 4750mm Outboard | 5000mm Outboard | 5250mm Outboard |
|---------------------------------|-----------------|-----------------|-----------------|-----------------|
| SWL-UDL (kg)                    | 5000            | 4000            | 3200            | 2500            |
| RA* (t)                         | 9.9             | 10.1            | 10.8            | 12.0            |
| RB* (t)                         | 6.6             | 7.2             | 8.1             | 9.5             |
| RC* (t)                         | -0.4            | -0.3            | -0.1            | -0.1            |
| Deflections at outer wheel (mm) | △5              | △6              | △7              | △9              |
| Deflections at free end (mm)    | △29             | △29             | △30             | △31             |

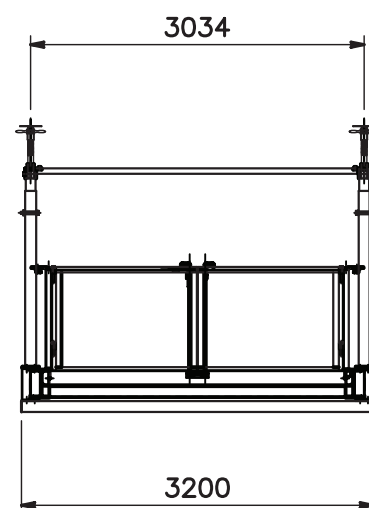
| OUTBOARD  | 4500mm Outboard | 4750mm Outboard | 5000mm Outboard | 5250mm Outboard |
|---|-----------------|-----------------|-----------------|-----------------|
| E =<br>(Distance from slab edge to back<br>end of H frame) (mm)       | 0               | 250             | 500             | 750             |
| D =<br>(Distance from centre line of<br>inner prop to slab edge) (mm) | 1643            | 1393            | 1143            | 893             |

| DIMENSIONS                                     |
|--|
| Length 8500mm    Width 3200mm    Height 1202mm |

| TARE           |
|----------------|
| Weight 3000 kg |



**SIDE ELEVATION**



**FRONT ELEVATION**

\*Reactions on each side of the platform.  
Assumed load always centre both ways on the outboard of the platform. All loads are static loads i.e. no load factors applied. Horizontal forced not taken into account. Reactions provided based on rigid supports i.e. effects on deflections of supporting slabs not factored into design.

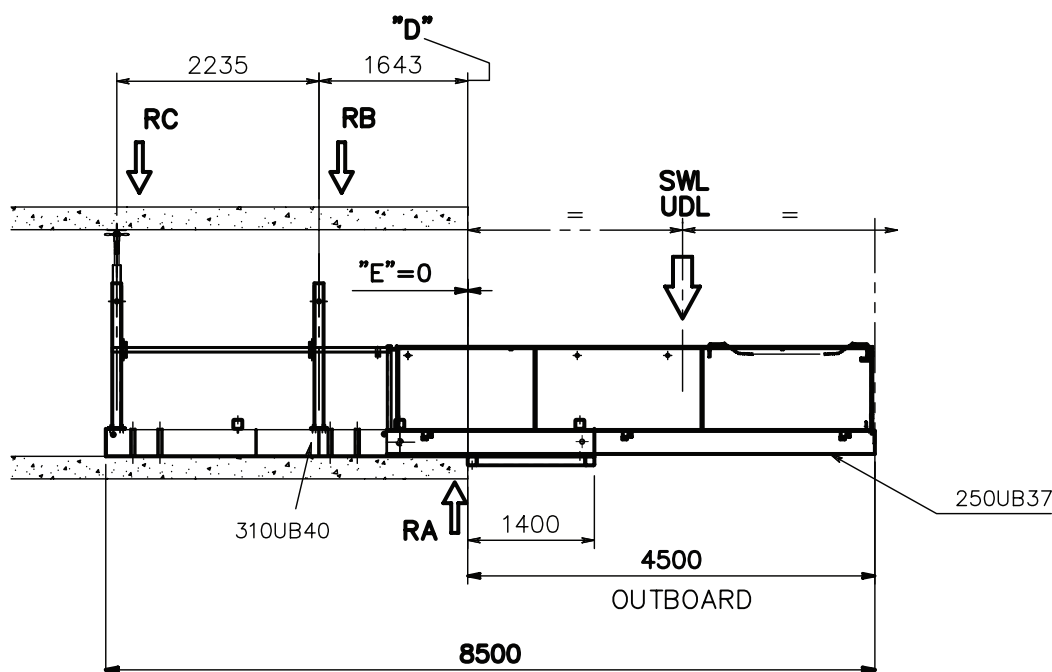
**PROP REACTIONS**

| LOAD/REACTION                   | 4500mm Outboard | 4750mm Outboard | 5000mm Outboard | 5250mm Outboard |
|---------------------------------|-----------------|-----------------|-----------------|-----------------|
| SWL-UDL (kg)                    | 5000            | 4000            | 3200            | 2500            |
| RA* (t)                         | 5.9             | 5.4             | 5.1             | 4.8             |
| RB* (t)                         | N/A             | N/A             | N/A             | N/A             |
| RC* (t)                         | 2.2             | 2.2             | 2.3             | 2.3             |
| Deflections at outer wheel (mm) | 10              | 11              | 13              | 14              |
| Deflections at free end (mm)    | 44              | 44              | 45              | 45              |

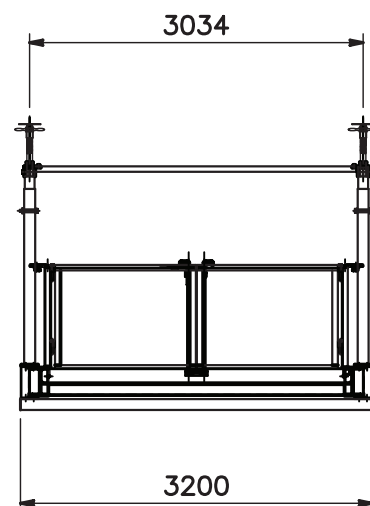
| OUTBOARD  | 4500mm Outboard | 4750mm Outboard | 5000mm Outboard | 5250mm Outboard |
|---|-----------------|-----------------|-----------------|-----------------|
| E =<br>(Distance from slab edge to back<br>end of H frame) (mm)       | 0               | 250             | 500             | 750             |
| D =<br>(Distance from centre line of<br>inner prop to slab edge) (mm) | 1643            | 1393            | 1143            | 893             |

| DIMENSIONS                                     |
|--|
| Length 8500mm    Width 3200mm    Height 1202mm |

| TARE           |
|----------------|
| Weight 3000 kg |



**SIDE ELEVATION**



**FRONT ELEVATION**

\*Reactions on each side of the platform.

Assumed load always centre both ways on the outboard of the platform. All loads are static loads i.e. no load factors applied. Horizontal forces not taken into account. Reactions provided based on rigid supports i.e. effects on deflections of supporting slabs not factored into design.

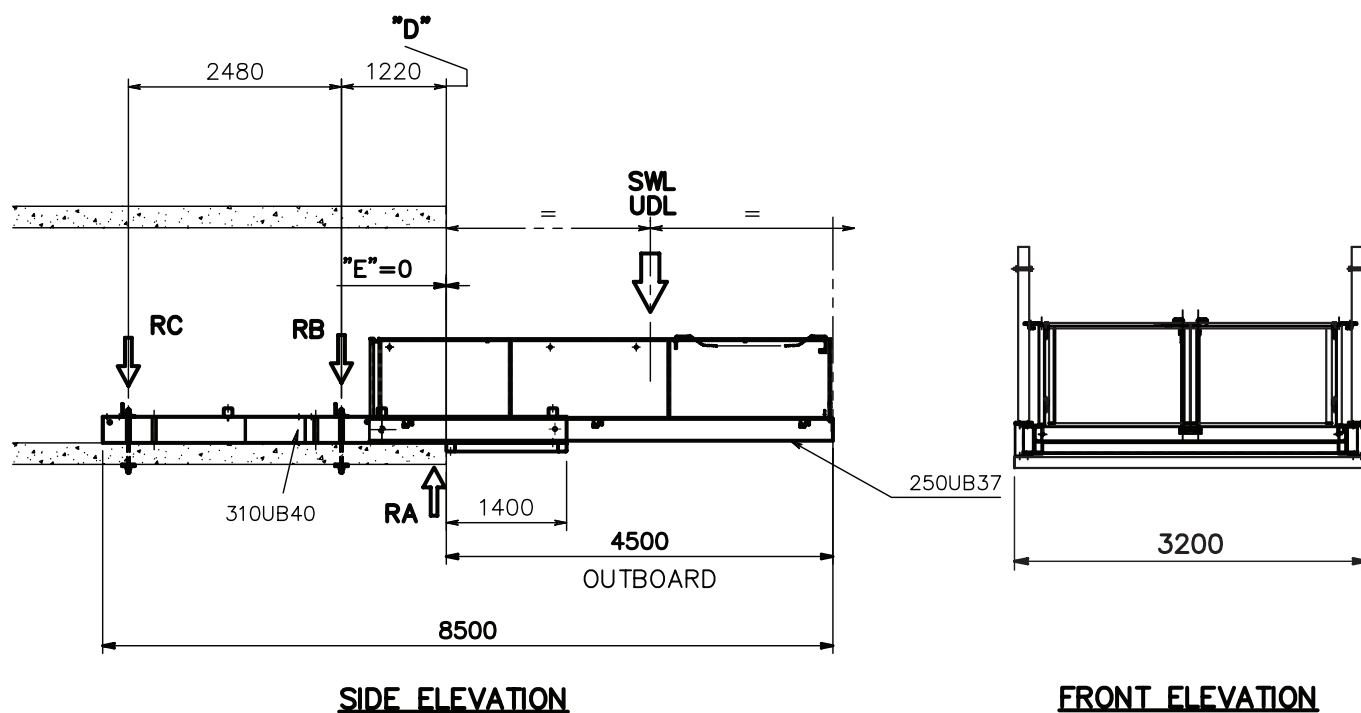
## BOLTDOWN REACTIONS

| LOAD/REACTION                   | 4500mm Outboard | 4750mm Outboard | 5000mm Outboard | 5250mm Outboard |
|---------------------------------|-----------------|-----------------|-----------------|-----------------|
| SWL-UDL (kg)                    | 5000            | 4000            | 3200            | 2500            |
| RA* (t)                         | 10.1            | 10.4            | 11.1            | 12.4            |
| RB* (t)                         | 6.9             | 7.5             | 8.4             | 9.7             |
| RC* (t)                         | -0.5            | -0.3            | -0.1            | 0.2             |
| Deflections at outer wheel (mm) | △5              | △6              | △7              | △9              |
| Deflections at free end (mm)    | △29             | △29             | △30             | △31             |

| OUTBOARD  | 4500mm Outboard | 4750mm Outboard | 5000mm Outboard | 5250mm Outboard |
|---|-----------------|-----------------|-----------------|-----------------|
| E =<br>(Distance from slab edge to back<br>end of H frame) (mm)       | 0               | 250             | 500             | 750             |
| D =<br>(Distance from centre line of<br>inner prop to slab edge) (mm) | 1220            | 970             | 720             | 470             |

| DIMENSIONS                                     |
|--|
| Length 8500mm    Width 3200mm    Height 1202mm |

| TARE           |
|----------------|
| Weight 3000 kg |



\*Reactions on each side of the platform.

Assumed load always centre both ways on the outboard of the platform. All loads are static loads i.e. no load factors applied. Horizontal forces not taken into account. Reactions provided based on rigid supports i.e. effects on deflections of supporting slabs not factored into design.



 **Auckland**

 **Wellington**

 **Christchurch**



## **SPECIALISED EQUIPMENT HIRE SOLUTIONS**

### **Service Facility Location**

Preston Hire - New Zealand  
31 Patiki Rd,  
Avondale, Auckland 1026  
[nzsales@prestonhire.co.nz](mailto:nzsales@prestonhire.co.nz)

*\*Preston Hire available across Oceania*



**COUNT ON US**

**0800 440 558 | [prestonhire.co.nz](http://prestonhire.co.nz)**