

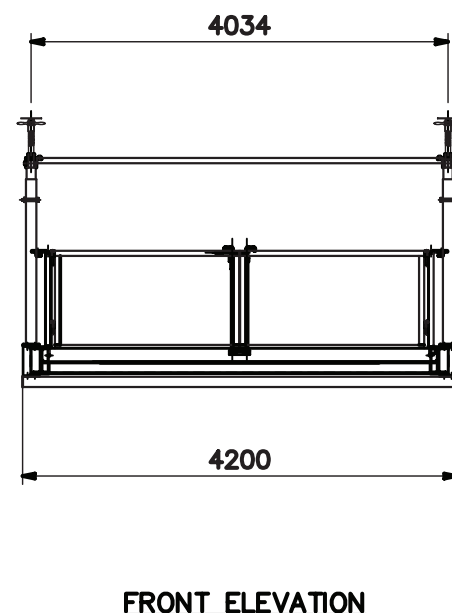
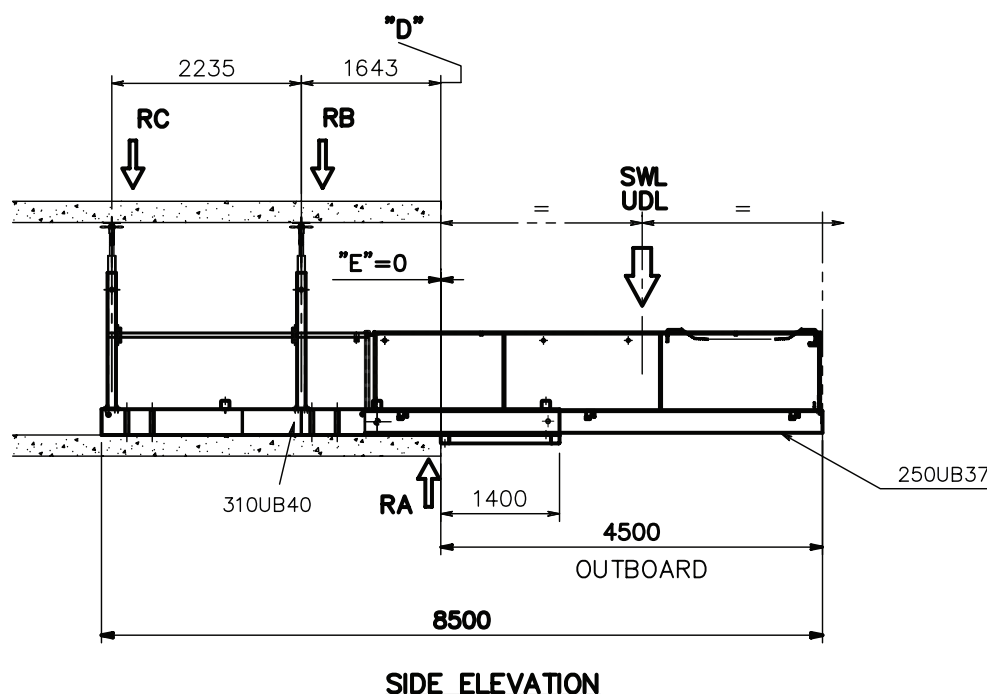
PROP REACTIONS

LOAD/REACTION	4500mm Outboard	4750mm Outboard	5000mm Outboard	5250mm Outboard
SWL-UDL (kg)	5000	4000	3200	2500
RA* (t)	10.6	10.9	11.8	13.3
RB* (t)	7.0	7.8	8.9	10.5
RC* (t)	-0.4	-0.3	-0.1	0.1
Deflections at outer wheel (mm)	△6	△7	△8	△10
Deflections at free end (mm)	△32	△32	△33	△35

OUTBOARD	4500mm Outboard	4750mm Outboard	5000mm Outboard	5250mm Outboard
E = (Distance from slab edge to back end of H frame) (mm)	0	250	500	750
D = (Distance from centre line of inner prop to slab edge) (mm)	1643	1393	1143	893

DIMENSIONS
Length 8500mm Width 4200mm Height 1202mm

TARE
Weight 3500kg



*Reactions on each side of the platform.
Assumed load always centre both ways on the outboard of the platform. All loads are static loads i.e. no load factors applied. Horizontal forces not taken into account. Reactions provided based on rigid supports i.e. effects on deflections of supporting slabs not factored into design.

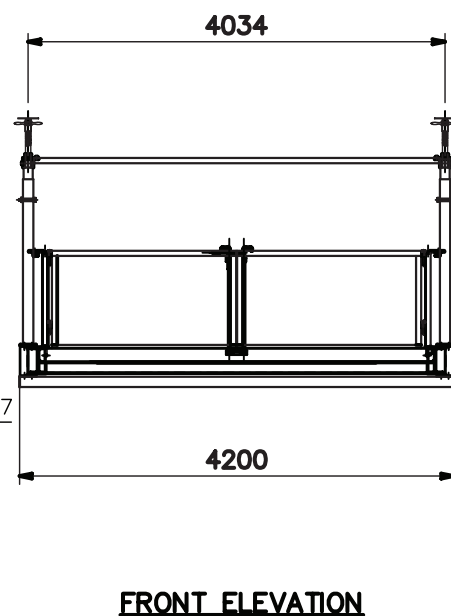
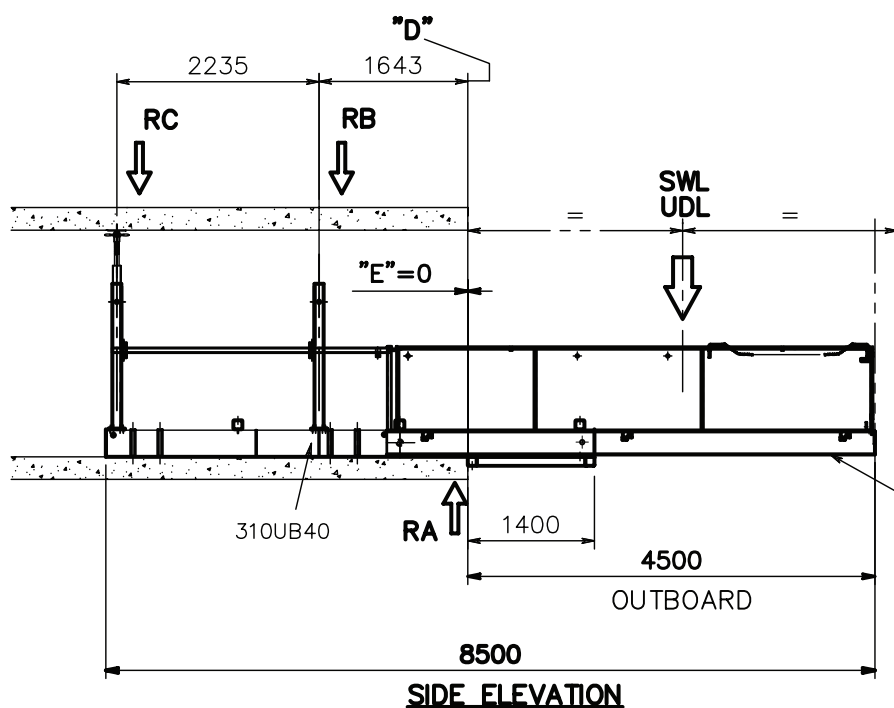
PROP REACTIONS

LOAD/REACTION				
	4500mm Outboard	4750mm Outboard	5000mm Outboard	5250mm Outboard
SWL-UDL (kg)	5000	4000	3200	2500
RA* (t)	6.3	5.9	5.6	5.3
RB* (t)	N/A	N/A	N/A	N/A
RC* (t)	2.4	2.4	2.5	2.6
Deflections at outer wheel (mm)	10	12	14	15
Deflections at free end (mm)	47	48	49	50

OUTBOARD				
	4500mm Outboard	4750mm Outboard	5000mm Outboard	5250mm Outboard
E = (Distance from slab edge to back end of H frame) (mm)	0	250	500	750
D = (Distance from centre line of inner prop to slab edge) (mm)	1643	1393	1143	893

DIMENSIONS			
Length	8500mm	Width	4200mm
Height	1202mm		

TARE	
Weight	3500kg



*Reactions on each side of the platform.

Assumed load always centre both ways on the outboard of the platform. All loads are static loads i.e. no load factors applied. Horizontal forces not taken into account. Reactions provided based on rigid supports i.e. effects on deflections of supporting slabs not factored into design.

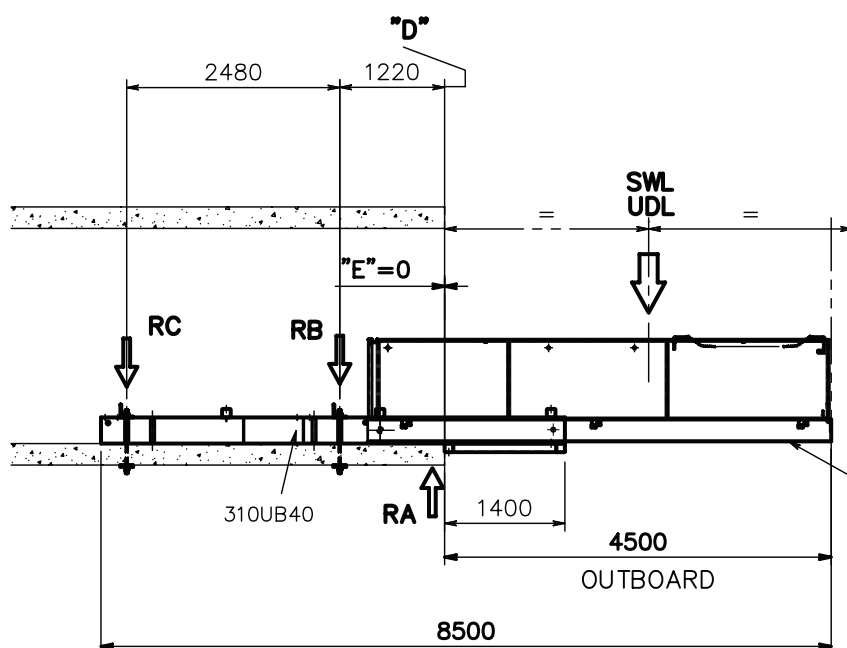
BOLTDOWN REACTIONS

LOAD/REACTION	4500mm Outboard	4750mm Outboard	5000mm Outboard	5250mm Outboard
SWL-UDL (kg)	5000	4000	3200	2500
RA* (t)	10.8	11.2	12.1	13.7
RB* (t)	7.4	8.1	9.2	10.8
RC* (t)	-0.5	-0.3	-0.1	2.5
Deflections at outer wheel (mm)	△6	△7	△8	△9
Deflections at free end (mm)	△31	△32	△33	△35

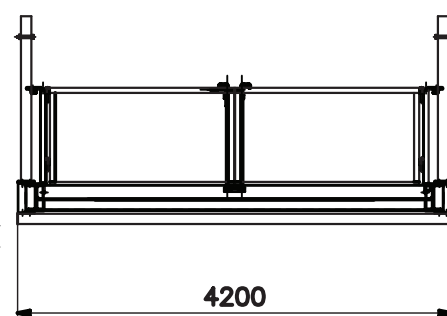
OUTBOARD	4500mm Outboard	4750mm Outboard	5000mm Outboard	5250mm Outboard
E = (Distance from slab edge to back end of H frame) (mm)	0	250	500	750
D = (Distance from centre line of inner prop to slab edge) (mm)	1220	970	720	470

DIMENSIONS			
Length	8500mm	Width	4200mm
Height	1202mm		

TARE	
Weight	3500kg



SIDE ELEVATION



FRONT ELEVATION

*Reactions on each side of the platform.
Assumed load always centre both ways on the outboard of the platform. All loads are static loads i.e. no load factors applied. Horizontal forces not taken into account. Reactions provided based on rigid supports i.e. effects on deflections of supporting slabs not factored into design.

SUPERDECK[®]

Designed to simplify the handling of materials, particularly on multi-storey construction sites, this revolutionary Preston Hire innovation offers a 'drawer-like' loading platform system which has dramatically increased safety and reduced crane operation time for customers around the world.

SUPERCRANE[™]

Preston Hire's crane hire fleet includes the largest mini crawler crane fleet in Australia. While initially focused on, and renowned for, the provision of mini crawler cranes, our crane fleet is growing constantly. Preston Hire is always equipped with mini cranes and larger cranes to meet your specific needs.

SUPERPROPPING[™]

Preston Hire offers a wide range of intelligent propping hire solutions for those working in the building and construction industry. Our extensive range of adjustable props are available for hire across Australia. Preston Hire ensures we can always deliver quality product and service for all your propping needs.

SUPERSITESTORAGE[™]

Our hire shipping containers offer cost effective and robust storage solutions. Being wind, water and vermin proof these lockable containers provide ideal storage for tools, machinery, sporting equipment, personal belongings and almost anything else. We also have available AS1940 - 2004 compliant Dangerous Goods storage containers.

SUPERLIFT[™]

Our range suits arborists, maintenance, construction, councils, painters, plasterers, agriculture, construction, building, park maintenance, councils, tree care and many more. Enabling traversing at heights and tackling undulating or rough terrain with safety and ease with versatility.



CONTACT

Preston Hire (NZ) Limited

PO Box 37025, Parnell Auckland 1151 New Zealand

nzsales@prestonhire.co.nz



COUNT ON US

0800 440 558 | prestonhire.co.nz