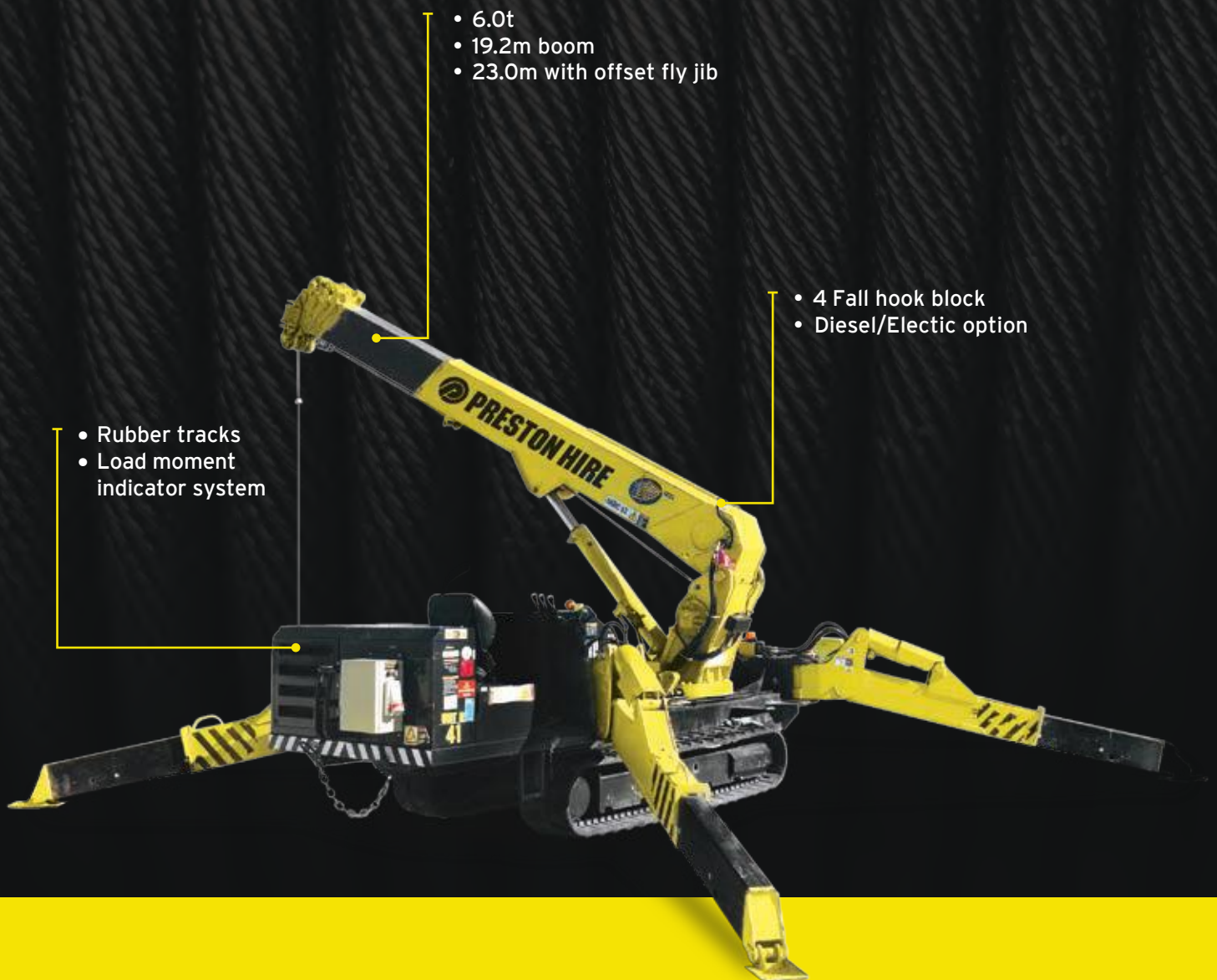


SUPERCRANE™ 706



The Preston Hire 706 sets one of the highest standards of lifting capability in the mini crane world. With a 6.0t capacity at 3.0m and a hook height of 19.5m and at 1670mm wide it is still narrow enough to gain access through a standard double doorway. For added lifting flexibility the 706 also features an optional searcher hook and a 3.1m long swing away fly jib, providing a maximum hook height of 22.7m. Consider the possibilities...



COUNT ON US

0800 440 558 | prestonhire.co.nz

SPECIFICATIONS SUPERCRAANE™

706

DIMENSIONS

Length	5610mm
Width	1670mm
Height	2185mm
Weight	8370kg

CAPACITY

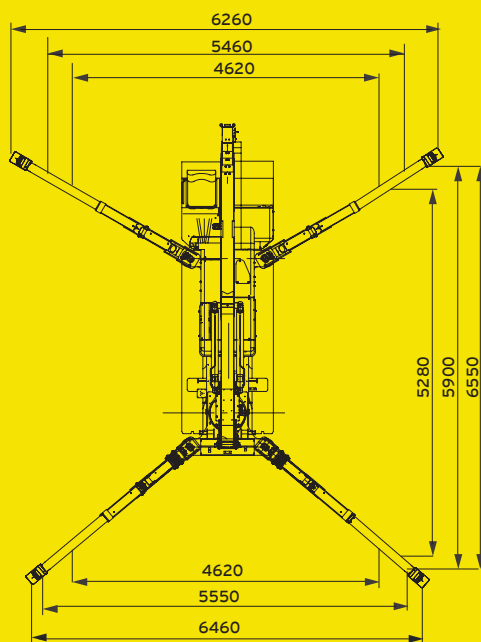
Max. capacity	6000kg at 3.0m
Max. working radius (main boom)	200kg at 18.6m
Max. working radius (fly jib)	300kg at 15.0m
Max. lifting height (main boom)	19.2m
Max. lifting height (fly jib)	23.0m

TRACK

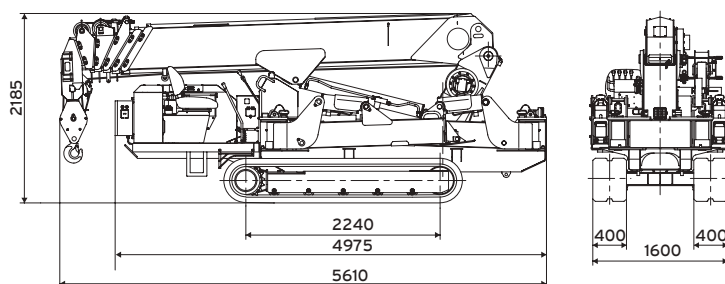
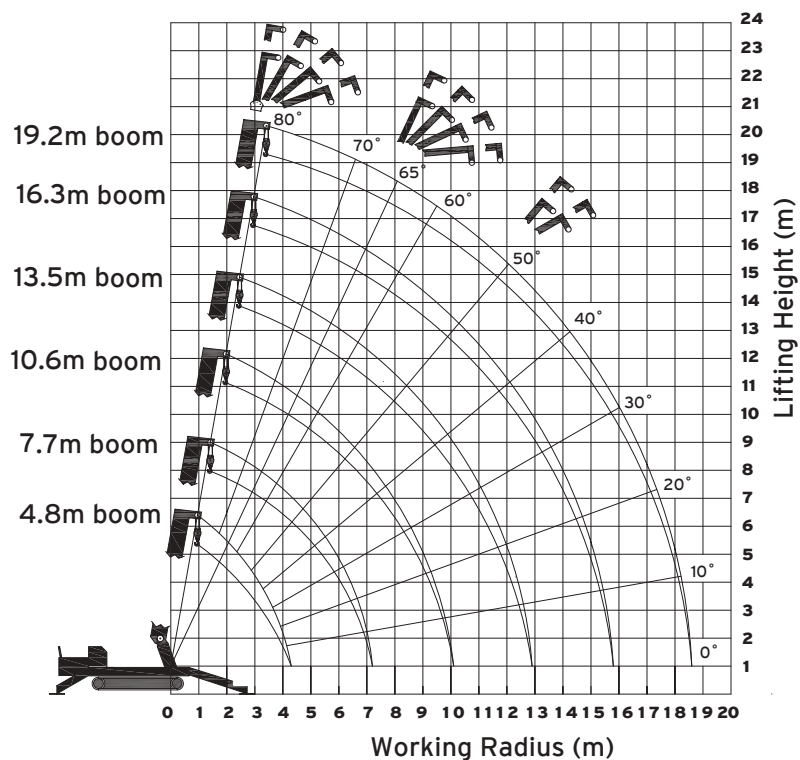
Width	400mm
-------	-------

MIN. TRANSPORT WIDTH

Overall Track	1600mm
Overall Unit	1670mm



WORKING RANGE



COUNT ON US

0800 440 558 | prestonhire.co.nz

LOAD CHART SUPERCRANE™

706

LOAD CHART

TOTAL RATED LOAD - OUTRIGGERS AT MAXIMUM POSITION

4.8m Boom		4.8 - 7.7m Boom		7.7 - 10.6m Boom		10.6 - 13.5m Boom		13.5 - 16.3m Boom		16.3 - 19.2m Boom	
Working Radius (m)	Total Rated Load (kg)	Working Radius (m)	Total Rated Load (kg)	Working Radius (m)	Total Rated Load (kg)	Working Radius (m)	Total Rated Load (kg)	Working Radius (m)	Total Rated Load (kg)	Working Radius (m)	Total Rated Load (kg)
1st stage extended		2nd stage extended		3rd stage extended		4th stage extended		5th stage extended		6th stage extended	
2.7	6000	2.0	6000	2.7	4550	5.0	2950	6.0	2350	8.0	1350
3.0	6000	3.0	6000	4.0	4550	6.0	2550	8.0	1700	10.0	1000
3.5	5450	3.5	5350	5.0	3650	7.0	2150	9.0	1400	12.0	800
4.0	4850	4.0	4750	6.0	2950	8.0	1850	10.0	1200	14.0	600
4.3	3950	5.0	3750	7.0	2400	9.0	1500	11.0	1000	16.0	400
		6.0	2950	8.0	1800	10.0	1200	12.0	850	18.0	250
		7.0	2250	9.0	1350	11.0	950	13.0	700	18.6	200
		7.2	2000	10.0	950	12.0	800	14.0	600		
				10.1	950	12.9	450	15.0	500		
								15.8	400		

TOTAL RATED LOAD - OUTRIGGERS AT INTERMEDIATE POSITION

4.8m Boom		4.8 - 7.7m Boom		7.7 - 10.6m Boom		10.6 - 13.5m Boom		13.5 - 16.3m Boom		16.3 - 19.2m Boom	
Working Radius (m)	Total Rated Load (kg)	Working Radius (m)	Total Rated Load (kg)	Working Radius (m)	Total Rated Load (kg)	Working Radius (m)	Total Rated Load (kg)	Working Radius (m)	Total Rated Load (kg)	Working Radius (m)	Total Rated Load (kg)
1st stage extended		2nd stage extended		3rd stage extended		4th stage extended		5th stage extended		6th stage extended	
2.7	6000	2.0	6000	2.7	4550	5.0	2950	6.0	2350	8.0	1350
3.0	6000	3.0	6000	4.0	4550	6.0	2550	8.0	1500	10.0	1000
3.5	5450	3.5	5350	5.0	3650	7.0	1850	9.0	1150	12.0	650
4.0	4850	4.0	4750	6.0	2950	8.0	1400	10.0	950	14.0	450
4.3	3950	5.0	3750	7.0	1750	9.0	1100	11.0	750	16.0	300
		6.0	2450	8.0	1300	10.0	850	12.0	600	18.0	200
		7.0	1700	9.0	950	11.0	650	13.0	500	18.6	150
		7.2	1550	10.0	700	12.0	550	14.0	400		
				10.1	700	12.9	400	15.0	300		
								15.8	250		



COUNT ON US

The total rated load charts are based on the actual working radius including boom

0800 440 558 | prestonhire.co.nz

SUPERCRANE™

Preston Hire's crane hire fleet consists of state-of-the-art mini crawler cranes from renowned manufacturer UNIC. Currently in 3 models with new models soon to arrive - available wet or dry, as needed and with operator training if required. Preston Hire is always equipped with mini cranes and larger cranes to meet your specific needs.

SUPERELEVATE™

A wide range of scissor lifts and Elevated Work Platforms, with a variety of vertical working heights and outreach. Perfect match for your work type and context, enabling traversing at heights and tackling undulating or rough terrain with safety and ease with versatility.

SUPERDECK®

Designed to simplify the handling of materials, particularly on multi-storey construction sites, this revolutionary Preston Hire innovation offers a 'drawer-like' loading platform system which has dramatically increased safety and reduced crane operation time for customers around the world.

SUPERSITESTORAGE™

Our hire shipping containers offer cost effective and robust storage solutions. Being wind, water and vermin proof these lockable containers provide ideal storage for tools, machinery, sporting equipment, personal belongings and almost anything else. We also have Dangerous Goods storage containers available.

SUPERPROPPING™

Preston Hire offers a wide range of intelligent propping hire solutions for those working in the building and construction industry. Our extensive range of adjustable props are available for hire across New Zealand. Preston Hire ensures we can always deliver quality product and service for all your propping needs.



CONTACT

Preston Hire (NZ) Pty Limited
PO Box 37025, Parnell Auckland 1151 New Zealand
E nzsales@prestonhire.co.nz
T 0800 440 558 - Toll Free
prestonhire.co.nz



COUNT ON US

0800 440 558 | prestonhire.co.nz