

# SUPERCRANE™

# 547

- 4.0t at 2.5m
- 18.02m Boom
- Max Lifting Height 18.2m

- Max working radius 17.83m
- Total width 1.4m

- Safe load indicator
- Radio remote control as standard



The Preston Hire SuperCrane™ 547 offers extended reach, providing a maximum lifting height of 18.2m and a maximum lifting capacity of 4.0t as standard on the main boom. An option of additional length is given with a quickly installed searcher hook, with angles varying for 0° to 60° and a maximum capacity of 500kg. Consider the possibilities...

# SPECIFICATIONS SUPERCRAANE™

## 547

### DIMENSIONS

Length	4955mm
Width	1400mm
Height	1980mm
Weight	5010kg (5160kg with electric option)

### CAPACITY

Crane capacity	4000kg x 2.5m
Max working radius	17.83m
Max lifting height	18.2m
Rope length	22.32m (4 fall), 46.13m (2 fall), 93.76m (1 fall)
Rope length	22.32m (4 fall), 46.13m (2 fall), 93.76m (1 fall)
Dimensions folded:	4955mm (l) x 1400mm (w) x 1980mm (h)
Point loadings	Due to the many variables involved, point loadings are only available on request

### TRACK

Width	300mm
Traction system drive:	hydrostatic 2-speed, stepless forward and reverse
Travel speed:	0 - 3km/h
Gradability:	23°
Track ground length:	1750mm
Track ground pressure:	47kPa (0.48kg/cm²)

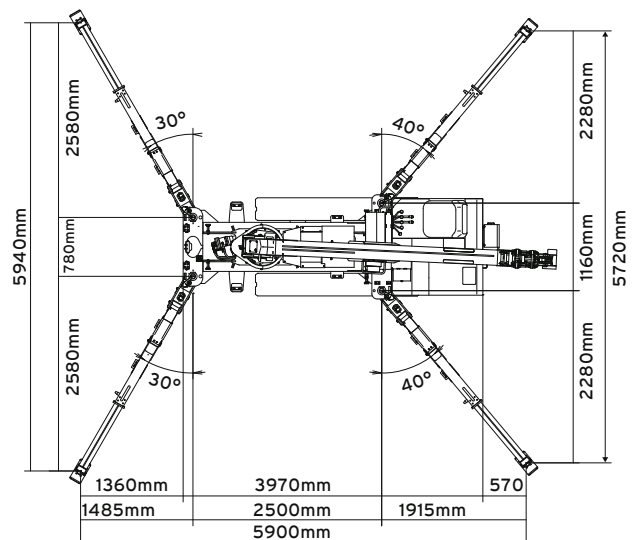
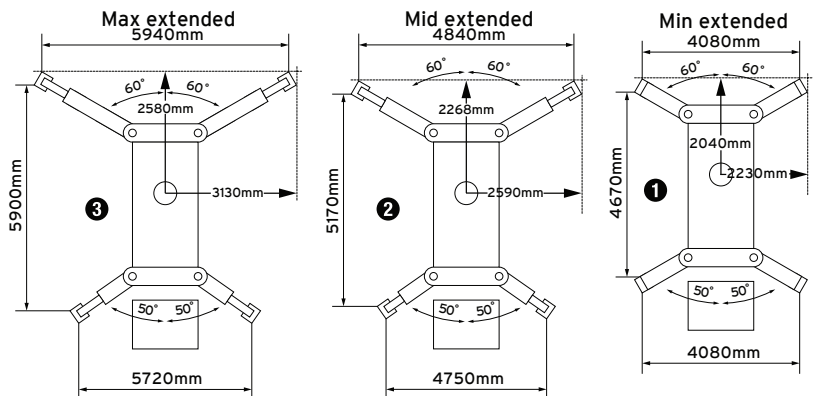
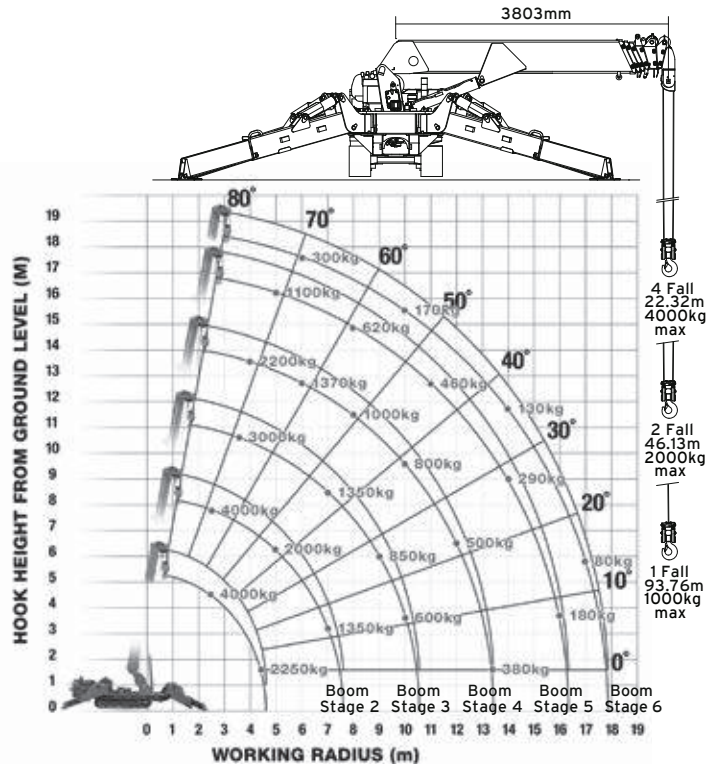
### BOOM

Hook speed approx:	14m/min (with 5 layers and 4 falls)
Derricking angle/ speed approx:	0 - 80° / 18.0 seconds
Slewing angle/speed approx:	360° (continuous) 2.5min rpm

### TELESCOPIC SYSTEM

boom length:	3.99 - 18.02m
telescoping speed:	14.03m/35 seconds
boom type:	7 section hydraulically telescoping boom, hexagonal box construction

### WORKING RANGE



# LOAD CHART SUPERCRANE™

## 547

### LOAD CHART

#### SECOND STAGE EXTENDED 2.53 - 4.075M BOOM LENGTH

Working radius Outrigger (m)	up to 1.0	1.4	1.5	1.8	2.0	2.5	3.0	3.5	3.835
Max-extended (kg)	2900	2900	2650	2250	2050	1650	1300	1000	900
Min-extended (kg)	2000	2000	2000	1450	1100	650	490	350	250

#### THIRD STAGE EXTENDED 4.075 - 5.61M BOOM LENGTH

Working radius Outrigger (m)	up to 2.2	2.5	2.9	3.0	3.5	4.0	4.5	5.0	5.37
Max-extended (kg)	1350	1350	1350	1250	1000	800	650	520	430
Min-extended (kg)	800	650	530	500	380	280	220	160	120

#### FOURTH STAGE EXTENDED 5.61 - 7.13M BOOM LENGTH

Working radius Outrigger (m)	up to 3.4	3.8	4.0	4.5	5.0	5.5	6.0	6.5	6.89
Max-extended (kg)	850	850	750	600	500	420	360	320	270
Min-extended (kg)	420	340	300	250	190	140	100	80	60

#### FIFTH STAGE EXTENDED 7.13 - 8.65M BOOM LENGTH

Working radius Outrigger (m)	up to 3.8	4.1	4.5	5.0	5.5	6.0	6.5	7.0	8.0	8.41
Max-extended (kg)	550	550	450	370	310	270	230	200	150	130
Min-extended (kg)	350	290	250	200	160	130	100	70	40	30

The total rated load charts are based on the actual working radius including boom deflection.

Disclaimer : All information provided in this publication is correct at time of printing. Please contact Preston Hire for any updated versions.



COUNT ON US

0800 440 558 | [prestonhire.co.nz](http://prestonhire.co.nz)

## **SUPERCRANE™**

Preston Hire's crane hire fleet consists of state-of-the-art mini crawler cranes from renowned manufacturer UNIC. Currently in 3 models with new models soon to arrive - available wet or dry, as needed and with operator training if required. Preston Hire is always equipped with mini cranes and larger cranes to meet your specific needs.

## **SUPERLIFT™**

A wide range of scissor lifts and Elevated Work Platforms, with a variety of vertical working heights and outreach. Perfect match for your work type and context, enabling traversing at heights and tackling undulating or rough terrain with safety and ease with versatility.

## **SUPERDECK®**

Designed to simplify the handling of materials, particularly on multi-storey construction sites, this revolutionary Preston Hire innovation offers a 'drawer-like' loading platform system which has dramatically increased safety and reduced crane operation time for customers around the world.

## **SUPERSITESTORAGE™**

Our hire shipping containers offer cost effective and robust storage solutions. Being wind, water and vermin proof these lockable containers provide ideal storage for tools, machinery, sporting equipment, personal belongings and almost anything else. We also have Dangerous Goods storage containers available.

## **SUPERPROPPING™**

Preston Hire offers a wide range of intelligent propping hire solutions for those working in the building and construction industry. Our extensive range of adjustable props are available for hire across New Zealand. Preston Hire ensures we can always deliver quality product and service for all your propping needs.



## **CONTACT**

**Preston Hire (NZ) Pty Limited**  
PO Box 37025, Parnell Auckland 1151 New Zealand  
E [nzsales@prestonhire.co.nz](mailto:nzsales@prestonhire.co.nz)  
T 0800 440 558 - Toll Free  
[prestonhire.co.nz](http://prestonhire.co.nz)



**COUNT ON US**

**0800 440 558 | [prestonhire.co.nz](http://prestonhire.co.nz)**