

# SUPERCRANE™ CITY CRANE



- 13.0t
- 26.0m boom
- 31.0m with off set fly jib

- Rubber tracks
- Load moment indicator system

- Climatised enclosed cabin
- Main & auxilliary winch systems
- 3.9m minimum turning radius

Safety, performance and versatility are some of the best attributes of the Preston Hire City Class Crane's . Equipped with all-wheel steering designed for rough terrain and a modern, comfortable and air-conditioned operators cabin, this machine is designed for use in both in urban and rural settings.



COUNT ON US

0800 440 558 | [prestonhire.co.nz](http://prestonhire.co.nz)

## SPECIFICATIONS SUPERCRANE™

## DIMENSIONS

Length	7440mm
Width	1995mm
Height	2845mm
Weight	13765kg

## CAPACITY

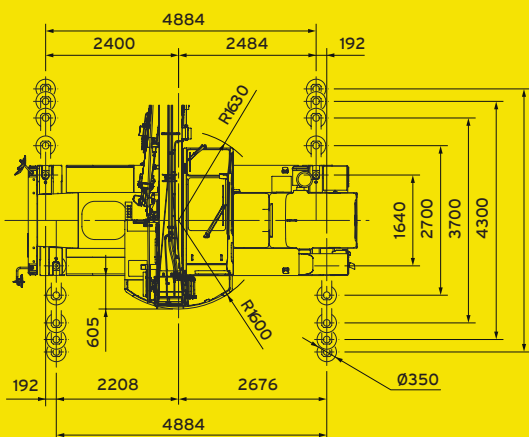
Max. capacity	13000kg at 1.7m
Max. working radius (main boom)	320kg at 22.5m
Max. working radius (fly jib)	260kg at 22.9m
Max. lifting height (main boom)	25.0m
Max. lifting height (fly jib)	30.0m

## TRACK

Width	1995mm
-------	--------

## MIN. TRANSPORT WIDTH

Overall Track	1995mm
Overall Unit	1995mm



## WORKING RANGE

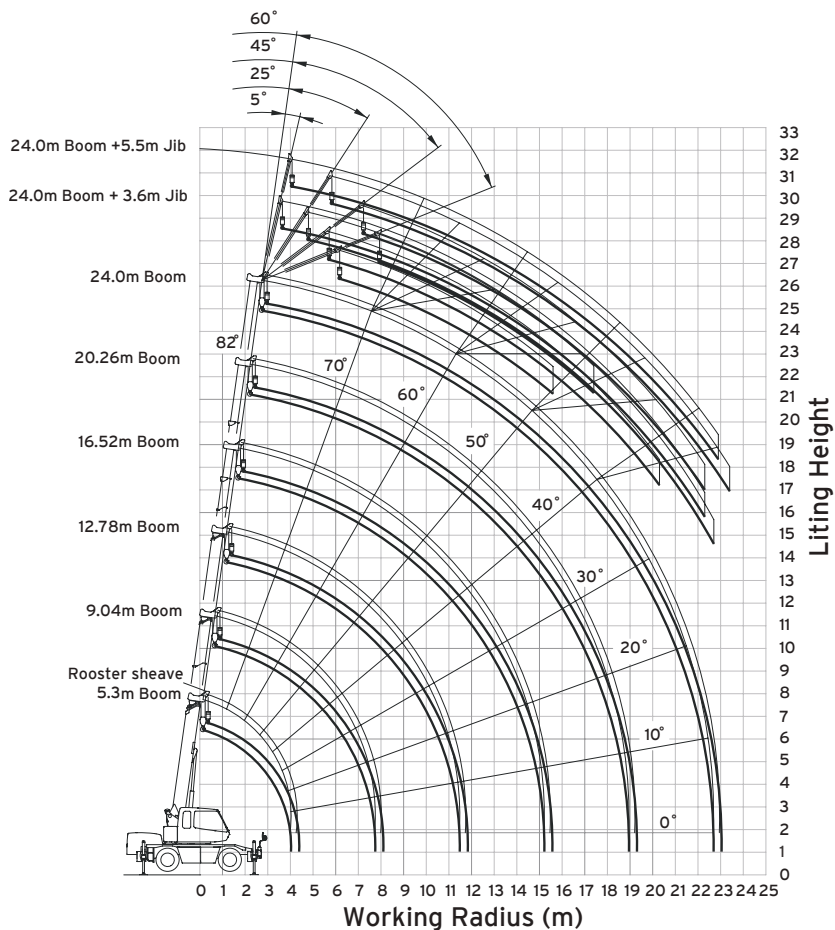
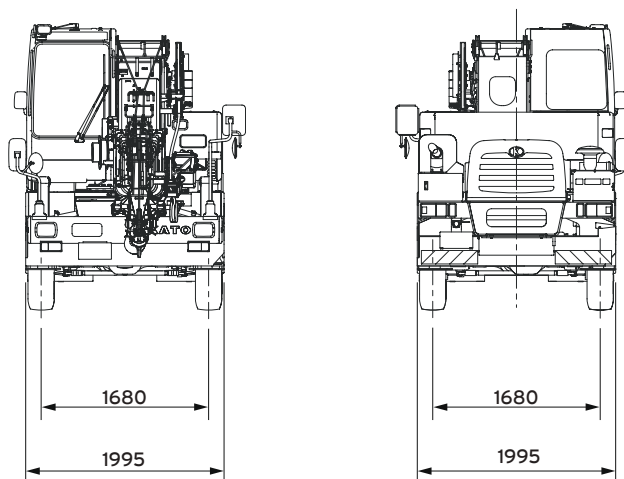


Diagram does not include deflection of boom and jib  
The outriggers are fully extended (360° full range).



# LOAD CHART SUPERCRANE™

## CITY CRANE

### LOAD CHART

#### TOTAL RATED LOAD - OUTRIGGERS AT MAXIMUM POSITION

	5.3m Boom	9.04m Boom	12.78m Boom	16.52m Boom	20.26m Boom	24.0m Boom
Working Radius (m)	Total Rated Load (t)	Total Rated Load (t)	Total Rated Load (t)	Total Rated Load (t)	Total Rated Load (t)	Total Rated Load (t)
1.5	13.00	6.00	6.00			
1.7	13.00	6.00	6.00			
2.0	12.00	6.00	6.00	5.00		
2.5	10.00	6.00	6.00	5.00		
3.0	8.20	6.00	6.00	5.00	4.70	
3.5	7.00	6.00	6.00	5.00	4.70	3.20
4.0	6.10	6.00	6.00	5.00	4.70	3.20
4.5		5.50	5.40	5.00	4.50	3.20
5.0		5.00	4.90	4.60	4.05	3.20
5.5		4.50	4.40	4.20	3.70	3.20
6.0		4.10	4.00	3.80	3.40	3.00
6.5		3.70	3.65	3.50	3.15	2.80
7.0		3.35	3.30	3.20	2.90	2.60
8.0		2.70(7.7m)	2.90	2.70	2.50	2.25
9.0			2.25	2.30	2.20	1.95
10.0			1.80	2.05	1.95	1.75
11.0			1.45	1.70	1.75	1.55
12.0			1.35(11.4m)	1.40	1.50	1.40
13.0				1.15	1.30	1.25
14.0				0.95	1.10	1.15
15.0				0.80	0.90	1.00
16.0					0.79	0.85
17.0					0.68	0.74
18.0					0.58	0.64
19.0					0.51(18.8m)	0.55
20.0						0.47
21.0						0.41
22.0						0.35
22.5						0.32

The total rated load charts are based on the actual working radius including boom deflection.



COUNT ON US

0800 440 558 | [prestonhire.co.nz](http://prestonhire.co.nz)



## **SUPERCRANE™**

Preston Hire's crane hire fleet consists of state-of-the-art mini crawler cranes from renowned manufacturer UNIC. Currently in 3 models with new models soon to arrive - available wet or dry, as needed and with operator training if required. Preston Hire is always equipped with mini cranes and larger cranes to meet your specific needs.

## **SUPERELEVATE™**

A wide range of scissor lifts and Elevated Work Platforms, with a variety of vertical working heights and outreach. Perfect match for your work type and context, enabling traversing at heights and tackling undulating or rough terrain with safety and ease with versatility.

## **SUPERDECK®**

Designed to simplify the handling of materials, particularly on multi-storey construction sites, this revolutionary Preston Hire innovation offers a 'drawer-like' loading platform system which has dramatically increased safety and reduced crane operation time for customers around the world.

## **SUPERSITESTORAGE™**

Our hire shipping containers offer cost effective and robust storage solutions. Being wind, water and vermin proof these lockable containers provide ideal storage for tools, machinery, sporting equipment, personal belongings and almost anything else. We also have Dangerous Goods storage containers available.

## **SUPERPROPPING™**

Preston Hire offers a wide range of intelligent propping hire solutions for those working in the building and construction industry. Our extensive range of adjustable props are available for hire across New Zealand. Preston Hire ensures we can always deliver quality product and service for all your propping needs.



## **CONTACT**

**Preston Hire (NZ) Pty Limited**  
PO Box 37025, Parnell Auckland 1151 New Zealand  
E [nzsales@prestonhire.co.nz](mailto:nzsales@prestonhire.co.nz)  
T 0800 440 558 - Toll Free  
[prestonhire.co.nz](http://prestonhire.co.nz)



**COUNT ON US**

**0800 440 558 | [prestonhire.co.nz](http://prestonhire.co.nz)**